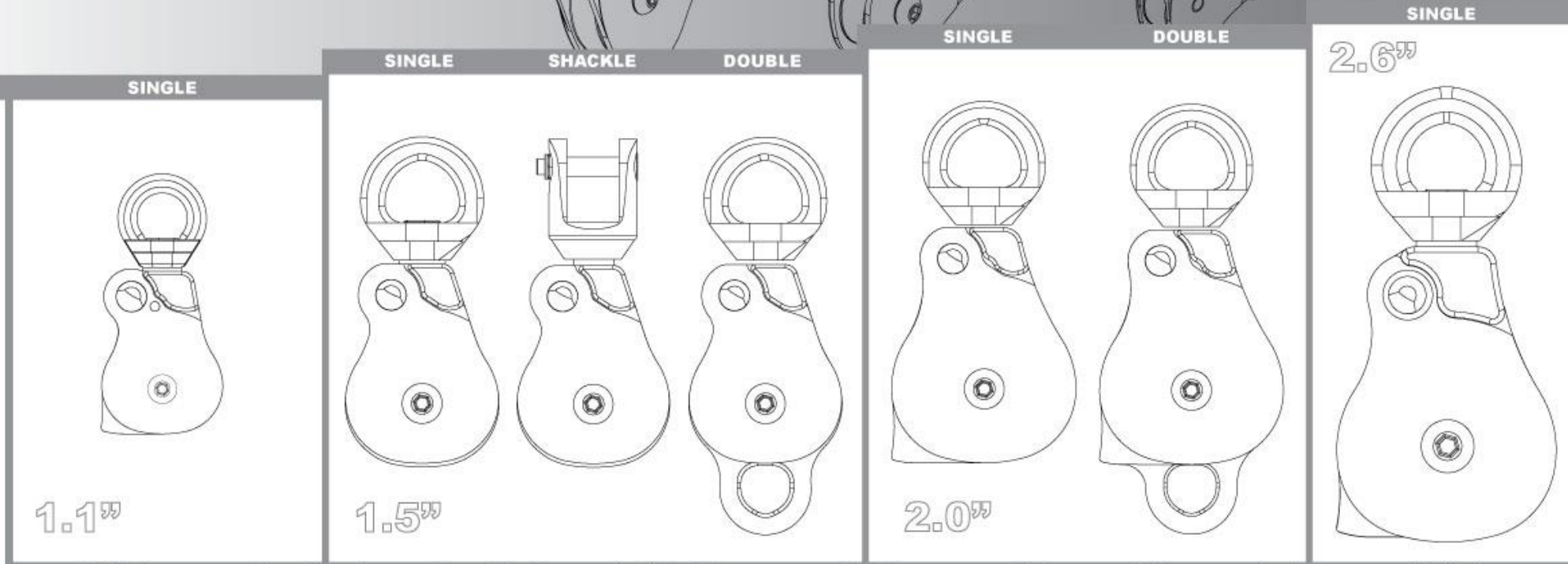
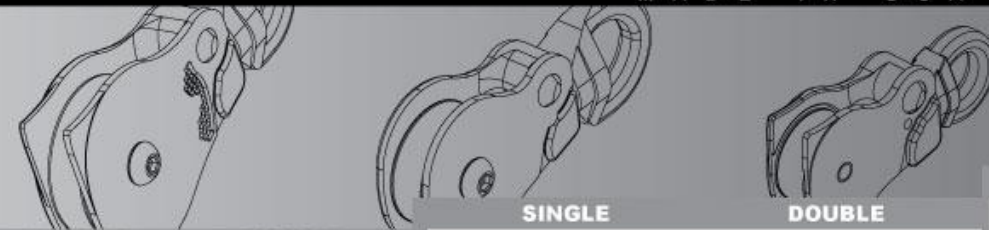


OMNI-BLOCK

SPECIFICATIONS

MODELS



	Part Number	Sheave Diameter	Sheave Material	Available Colors	Weight	MBS	WLL	Max Rope	Certification
Omni 1.1" Single	P54 / P54-B	1.1" (28mm)	Aluminum	Standard/Black	5.1oz (145gm)	23kN	5kN	.5" (13mm)	CE
Omni 1.5" Single	P51 / P51-B	1.5" (38mm)	Aluminum	Standard/Black	9.2oz (260gm)	36kN	8kN	.5" (13mm)	CE
Omni 1.5" Steel	P51 SS / P51 SS-B	1.5" (38mm)	Stainless Steel	Standard/Black	10.7oz (303gm)	36kN	8kN	.5" (13mm)	CE
Omni 1.5" Shackle	P51 SS / P51 SS-B	1.5" (38mm)	Aluminum	Black ONLY	10.7oz (303gm)	36kN	8kN	.5" (13mm)	CE
Omni 1.5" Double	P51 D / P51 D-B	1.5" (38mm)	Aluminum	Standard/Black	14.5oz (411gm)	36kN	8kN	.5" (13mm)	CE
Omni 2.0" Single	P53 / P53 D-B	2.0" (51mm)	Aluminum	Standard/Black	12.3oz (348gm)	36kN	8kN	.5" (13mm)	CE
Omni 2.0" Double	P53 D / P53 D-B	2.0" (51mm)	Aluminum	Standard/Black	19.4oz (548gm)	40kN	8kN	.5" (13mm)	CE
Omni 2.6" Single	P55 / P55-B	2.6" (66mm)	Aluminum	Standard/Black	1.9lbs (850gm)	80kN	20kN	.5" (13mm)	CE